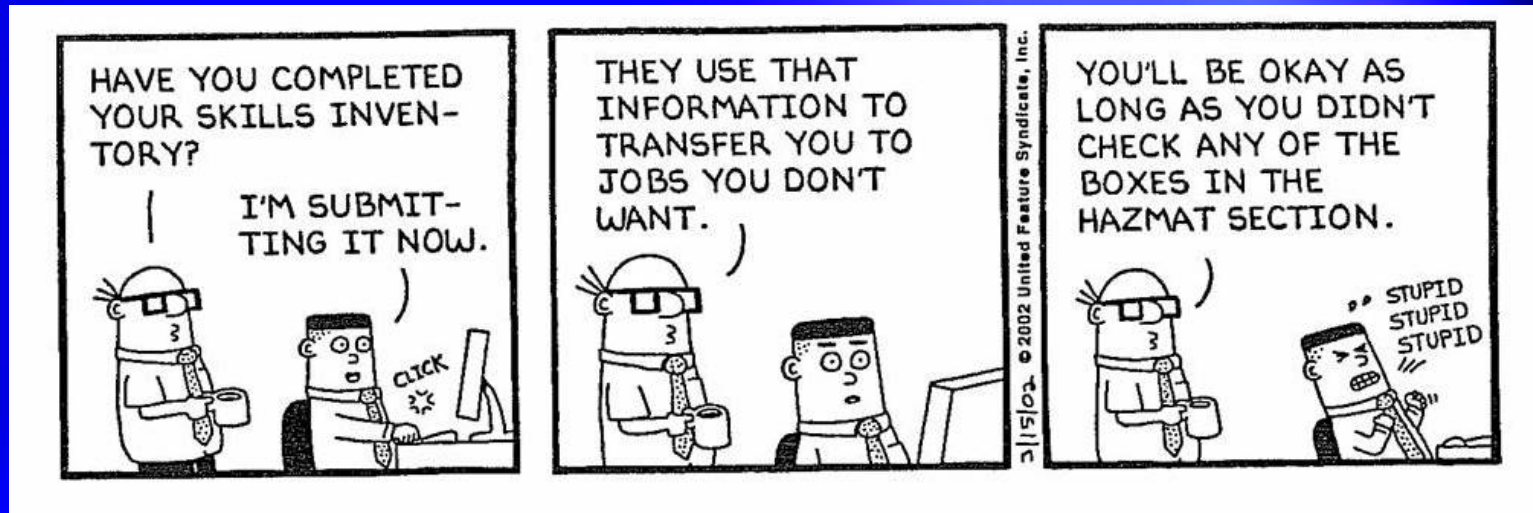




Infectious Training

DISEASED TRANSPORT REGULATIONS



Dangerous Goods Symposium for Instructors

November 9, 2006

Miami, FL

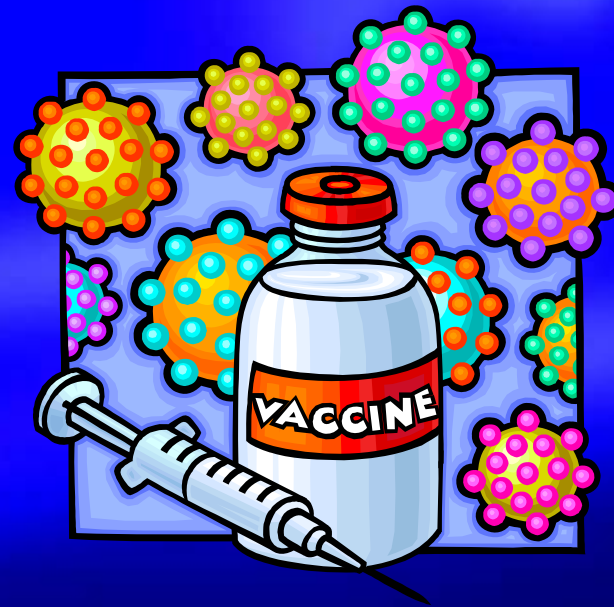
Jay Johnson

Inmark Inc.

Atlanta, GA

INFECTIOUS SUBSTANCE

Infectious substances are substances which are known or are reasonably expected to contain pathogens. Pathogens are defined as micro-organisms (including bacteria, viruses, rickettsiae, parasites, fungi) and other agents such as prions, which can cause disease in humans or animals.



ICAO/IATA NAME CHANGE

Effective January 1, 2007

According to the ICAO/IATA requirements, only the proper shipping name **“Biological Substance, Category B”** in letters at least 6mm high must be marked on the outer package adjacent to the diamond-shaped mark.

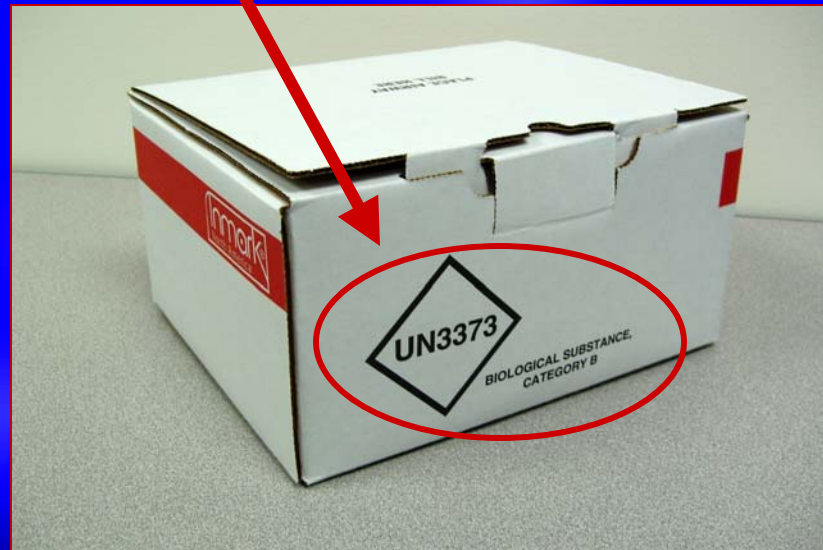


DOT NAME CHANGE

Effective October 1, 2006

According to Department of Transportation (DOT) requirements, only the proper shipping name “**Biological Substance, Category B**” in letters at least 6mm high must be marked on the outer package adjacent to the diamond-shaped mark.

EFFECTIVE NOW



DOT DROP TEST REQUIREMENT

Sec. 173.199 Category B infectious substances.

(a)(4) ...The packaging must be capable of successfully passing the drop tests in Sec. **Sec. 178.609(d) and (h) of this subchapter at a drop height of at least 1.2 meters (3.9 feet).**

178.609(d) Samples must be subjected to free-fall drops onto a rigid, nonresilient, flat, horizontal surface from a height of 9 m (30 feet).



DOT DROP TEST CONTINUED

178.609(h) Packagings with a gross mass of 7 kg (15 pounds) or less should be subjected to the tests described in paragraph (h)(1) of this section and packagings with a gross mass exceeding 7 kg (15 pounds) to the tests in paragraph (h)(2) of this section.

Please note this is the cylindrical steel rod test.

DOT will be correcting in near future...

NOT RIGHT



IATA DROP TEST REQUIREMENT (48th Edition)

Packaging Instruction 650

The complete package must be capable of successfully passing the drop test described in 6.6.1 except that the drop height must not be less than 1.2 m.

6.6 Test Criteria for Limited Quantity Packaging

6.6.1 Drop Test

**IATA will be correcting in
near future...**



NOT RIGHT

IATA TESTS 6.5.1

When the 48th Edition of IATA DGR is correctly linked to the drop test for infectious substances – additional testing requirements will include...

6.5.1 Tests

6.5.1.1 Drop Test Procedure

6.5.1.2 Water spray that simulates rainfall

6.5.1.3 Twenty four hour preconditioning at -18 deg C



COMPARISON OF AIR PACKAGING

	Category A PI 602	Category B PI 650	E.H.S.
Primary leakproof	watertight	√	√
Secondary leakproof	watertight	√	√
Outer package minimum dimension	100mm smallest	100mm x 100mm	100mm x 100mm
Rigid outer packaging	√	√	-
Drop test	9 Meters	1.2 Meters	-
95 kPa differential in the range of -40 deg C to 55 deg C	√	√	-
Puncture test	√	-	-
UN certified POP	√	-	-
Quantity limit per package	50 ml	4 liters	-

DOT FROZEN CAT B

173.199(d)(1) Ice or dry ice must be placed outside the secondary packaging or in an overpack. Interior supports must be provided to secure the secondary packagings in the original position after the ice or dry ice has dissipated. If ice is used, the outside packaging must be leakproof or must have a leakproof liner. If dry ice is used, the outside packaging must permit the release of carbon dioxide gas and otherwise meet the provisions in Sec. 173.217. The primary receptacle and secondary packaging must maintain their integrity at the temperature of the refrigerant used, as well as the temperatures and pressures of transport by aircraft they could be subjected to if refrigeration were lost, and sufficient absorbent material must be provided to absorb all liquid, including melted ice.



DOT TRAINING FOR CATEGORY B

173.199(e) Training. Each person who offers or transports a Category B infectious substance under the provisions of this section must know about the requirements of this section.





QUESTIONS?

Inmark's Atlanta Headquarters

Jay Johnson

jayj@inmarkinc.com

800-646-6275

